

# Vertical Migration: The largest movement of animals on Earth!

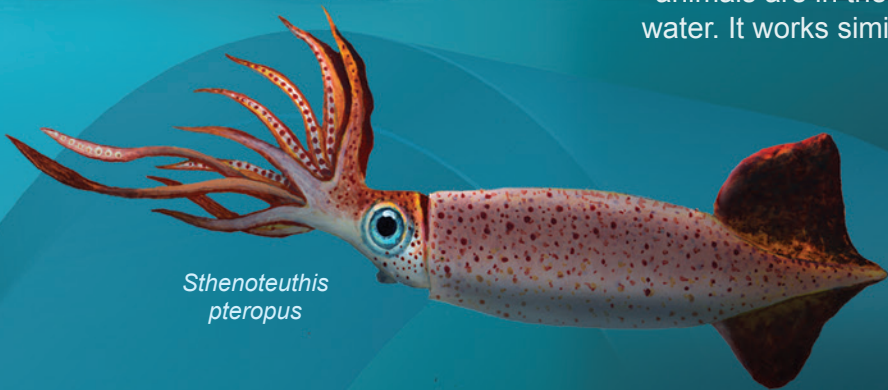
The DEEPEND scientists use many tools to gather information about vertical migration and the deep sea in general. Their work is coordinated from the ship *R/V Point Sur*.



Tool profile: The transducer used sound waves to determine where animals are in the surrounding water. It works similarly to sonar.

Tool profile: MOCNESS is a large trawl net lowered from the back of the ship. It is an efficient way for scientists to gather animal specimens.

When the sun rises, animals return to the darker depths.



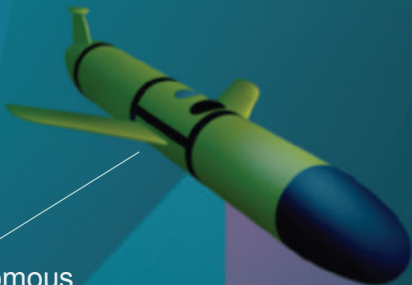
*Sthenoteuthis pteropus*

During the nighttime hours, animals feed close to the water's surface.

*Argyrops aculeatus*



Vertical migration is the movement of animals up and down in the water column over a 24 hour period.



Tool profile: The glider is an autonomous underwater vehicle which moves independently of the *R/V Point Sur*. It uses optical and electronic sensors to examine the water column through which animals migrate.



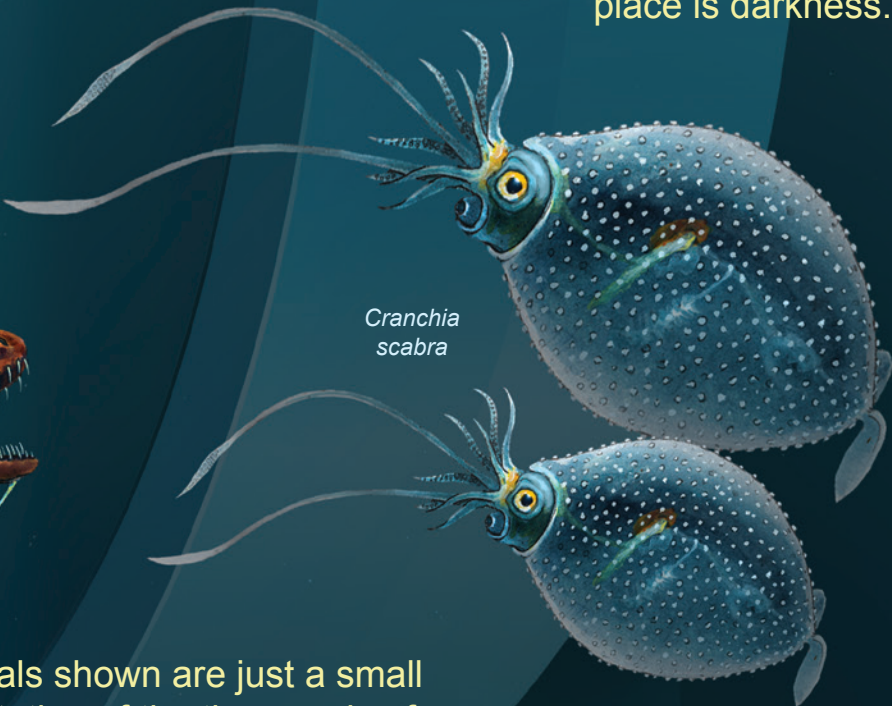
*Euphausila sp.*

Darker waters help animals hide from predators.



*Echiostoma barbatum*

*Cranchia scabra*



In a world with no solid habitat, the only hiding place is darkness.

The animals shown are just a small representation of the thousands of species that vertically migrate.

Copyright © 2016 by Oregon Coast Aquarium. All Rights Reserved.