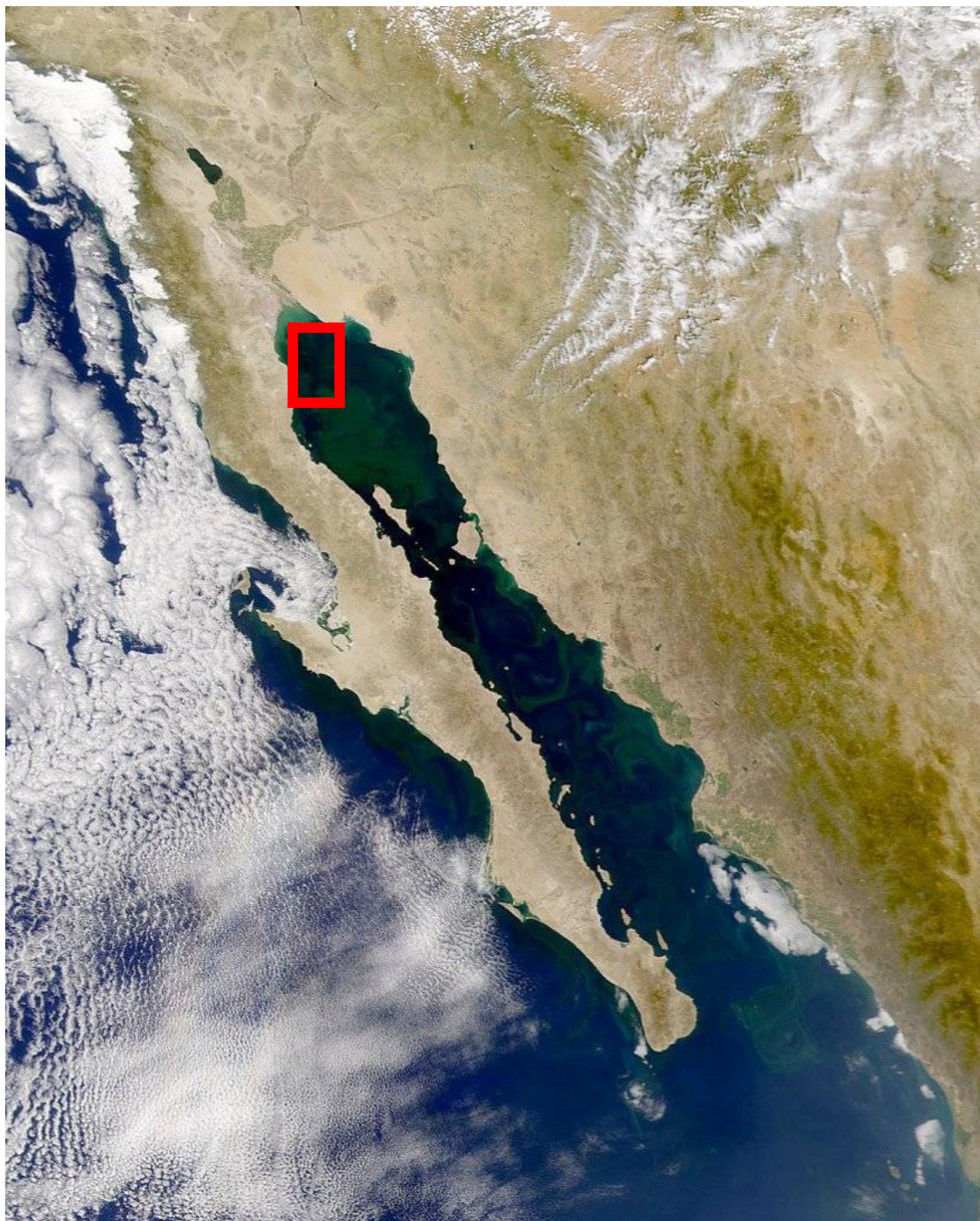


*Celebration of Conservation:
Gray Wales, Elephant Seals, & Vaquita*
www.whaletimes.org

SEAMAIL™



Gulf of California, Mexico

Photographs used with permission National Marine Fisheries Service/NOAA

*Celebration of Conservation:
Gray Whales, Elephant Seals, & Vaquita*
www.whaletimes.org

SEAMAIL™



Photographs used with permission National Marine Fisheries Service/NOAA

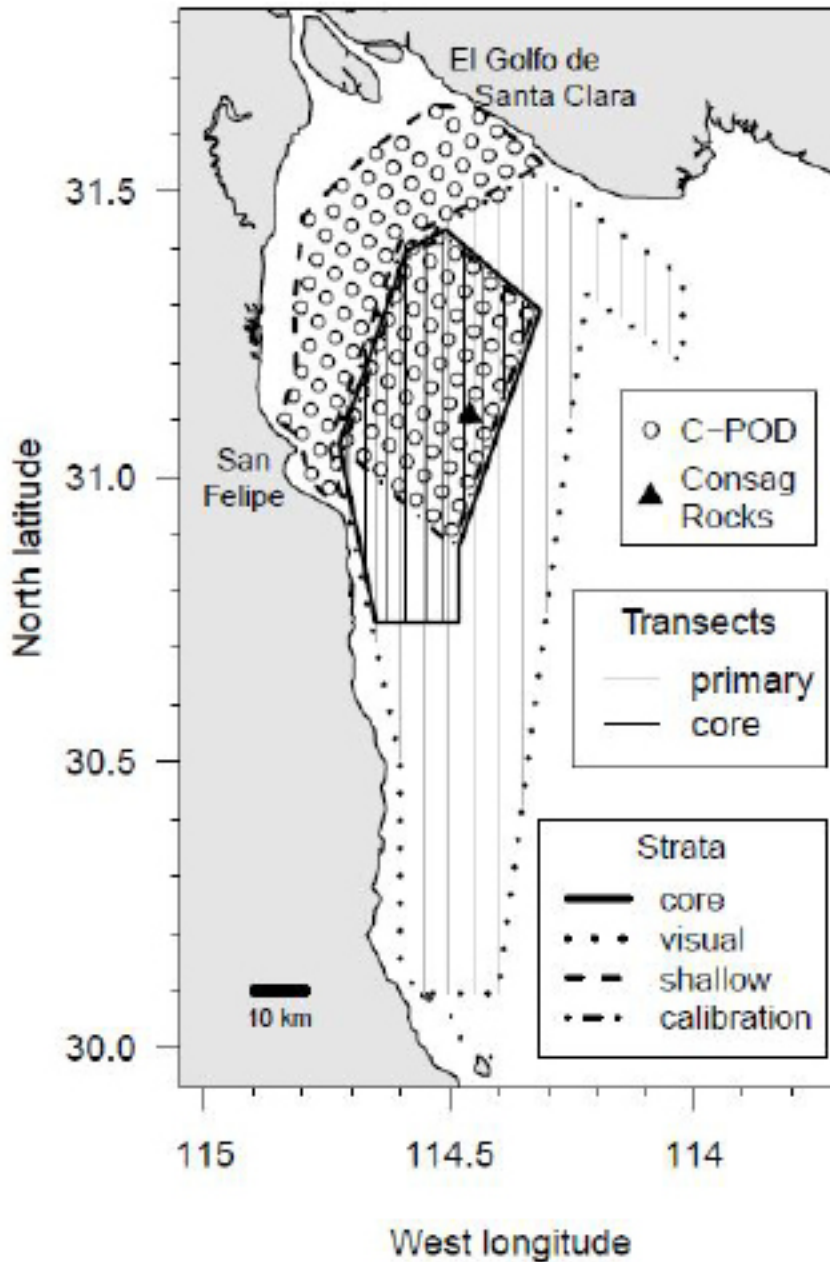
Celebration of Conservation: Gray Wolves, Elephant Seals, & Vaquita

www.whaletimes.org



SEAMAIL™

2015 Vaquita Survey



Photographs used with permission National Marine Fisheries Service/NOAA

2015 Vaquita survey design: Research design for 2015 vaquita abundance study. The dotted line outlines the area sampled visually, with visual transects shown as black lines running from north to south. Dashed lines outline the area to be sampled acoustically, with acoustic sensor (C-POD) locations shown as small circles. Dark black lines outlines the area sampled with both acoustic and visual methods. Consag Rocks appears as a black triangle