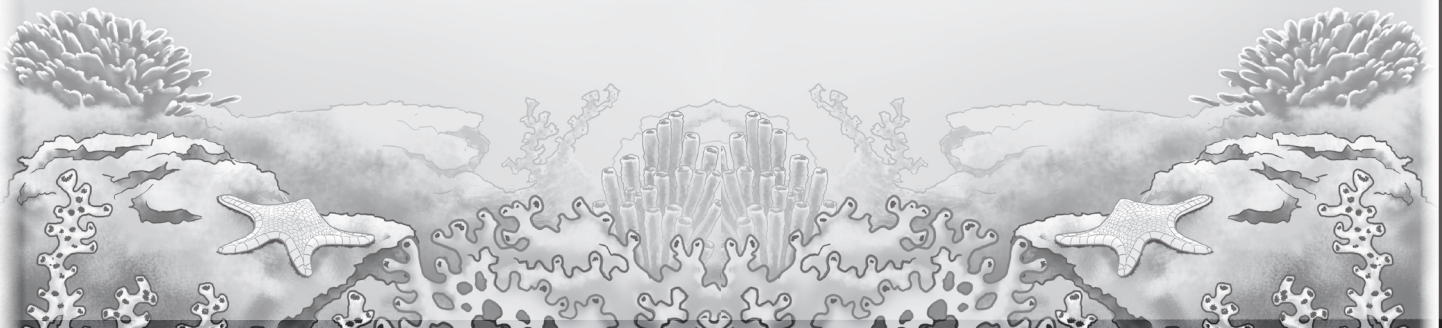


Creep into the Deep:  
Discovering Deep-Sea Coral



DEEP-SEA EXPLORER  
**JiAnne Robinson**

Illustration by Paul Lopez



WhaleTimes, Inc. Curriculum  
[www.whaletimes.org](http://www.whaletimes.org)

Defying Dissolution: North Pacific Deep-Sea Scleractinian  
Reefs in Undersaturated Water (NSF OCE-1851378)

Creep into the Deep:  
Discovering Deep-Sea Coral

# JiAnne Robinson

Research Assistant/Senior Undergraduate  
Texas A&M University

## Studies:

Environmental geoscience with a specialization in human impact on the environment. Particular interest in urban and environmental management along with sustainability.

## Research Focus:

Assist in research in the Stable Isotope Geoscience Facility (SIGF) at A&M to analyze the chemistry of the coral and water samples.

## Has Studied:

Oceanography, marine pollution, environmental politics, environmental justice, data analysis, urban issues, along with scripting and mapping softwares.

## Three things JiAnne does to help the Earth:

To reduce waste, I purchase reusable items, re-purpose items rather than throw them away, and get around town almost exclusively on my moped, Zelda.

## Something surprising about JiAnne:

*I have three little sisters, play cello, love to read, and have skydived from an airplane at a height of 10,000ft. One day I hope to swim with sharks!*

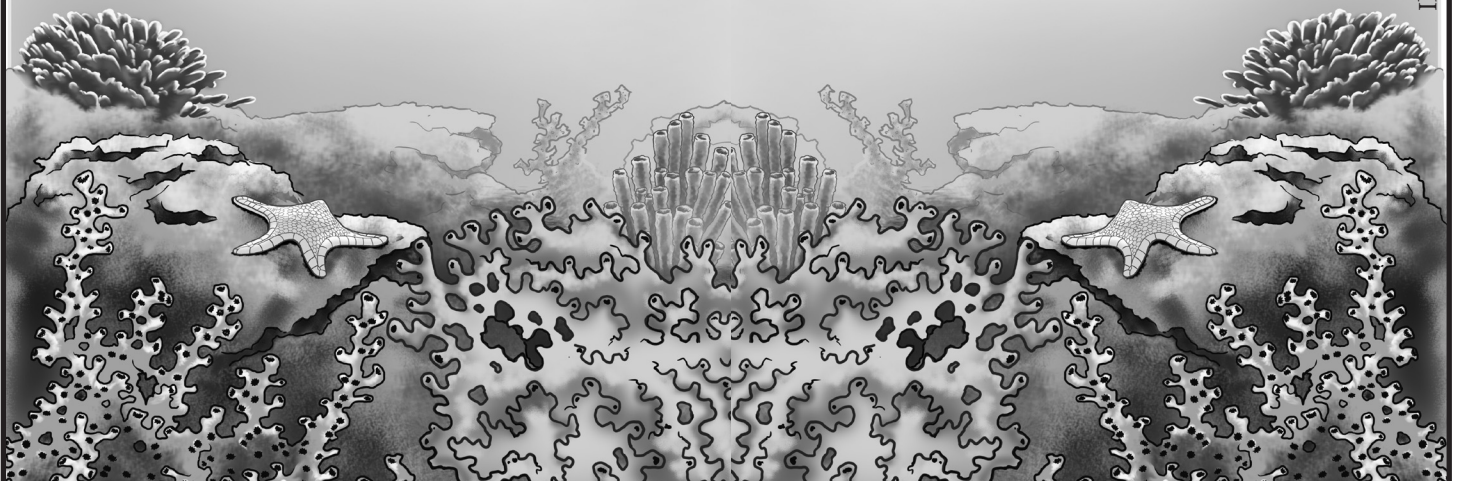


Illustration by Paul Lopez