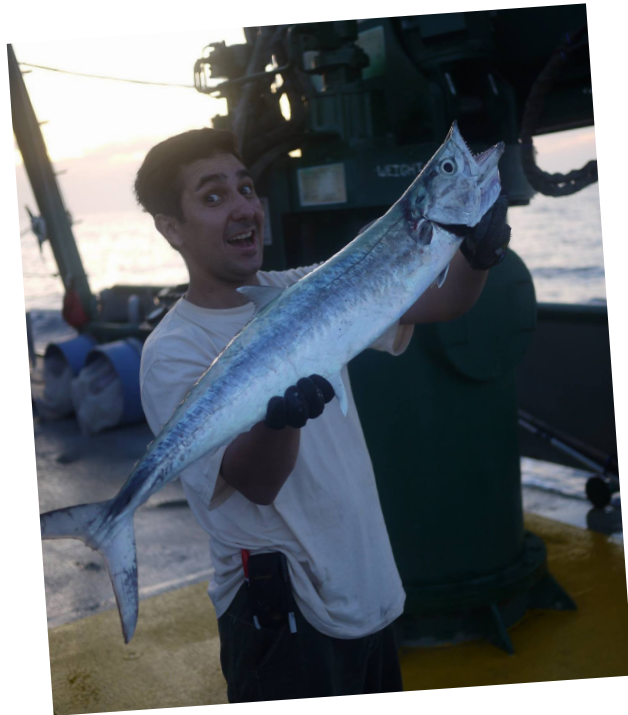
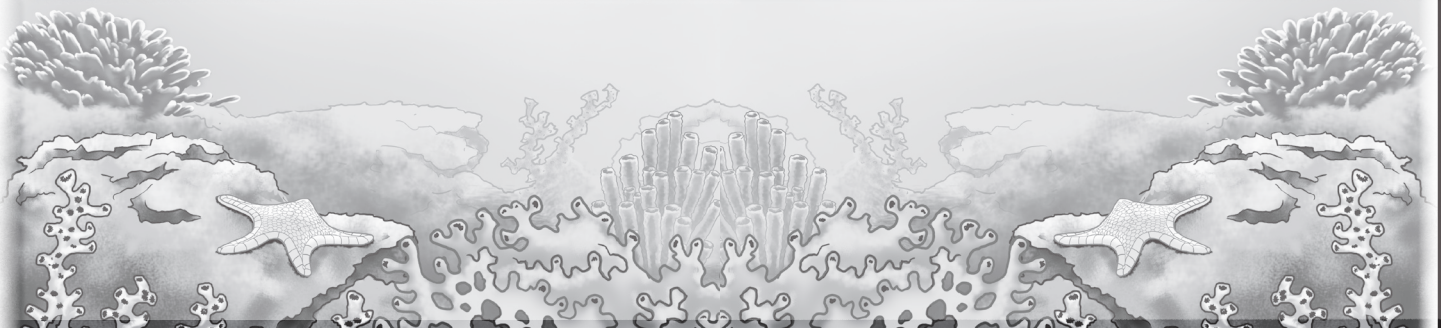


# Creep into the Deep: Discovering Deep-Sea Coral



## DEEP-SEA EXPLORER **Mauricio Silva**

Illustration by Paul Lopez



WhaleTimes, Inc. Curriculum  
[www.whaletimes.org](http://www.whaletimes.org)

Defying Dissolution: North Pacific Deep-Sea Scleractinian  
Reefs in Undersaturated Water (NSF OCE-1851378)

Creep into the Deep:  
Discovering Deep-Sea Coral

## Mauricio Silva, PhD

Researcher and Postdoctoral Fellow  
Florida State University

### Studies:

Deep-sea ecology and geomorphology, hydrocarbon systems, remote sensing, and environmental modeling.

### Research Focus:

Creates Habitat Suitability Models used to find the deep-sea corals reefs and try to find out why they are there. Endeavoring to understand what is affecting the earth and its organisms and how can be fixed.

### Has Studied:

Studies using interdisciplinary data from echosounders, satellite images, numerical predictive oceanographic models and images from subs, Remotely Operated Vehicles (ROV) and Autonomous Underwater Vehicles (AUV). Dove in the Alvin Submarine in the Gulf of Mexico.

### Three things Mauricio does to help the Earth:

My family and I recycle all our trash in five categories: organics, paper and cardboard, plastics, metal and glass. I drive a Hybrid car and plan to get an electric car soon.

### Something surprising about Mauricio:

*I am a soccer coach for a soccer club and Varsity High School girls' soccer. I fish from the shore and a boat. In college, hobbies included SCUBA, free-diving, and surfing.*

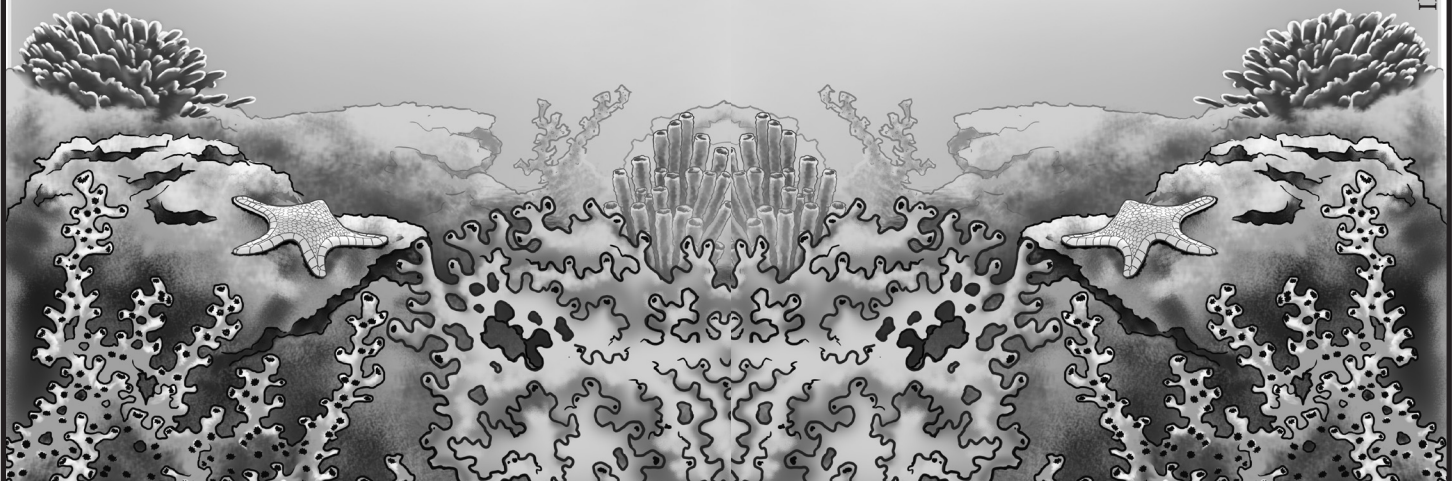


Illustration by Paul Lopez